

ULSAN/Ulsan(RKPU)
RWY 18
RNAV LAPAL 2D, RNAV APARU 2D

AERONAUTICAL DATA TABULATION

Standard Instrument Arrival Procedure Coding Tables

RNAV LAPAL 2D

Serial Number	Path Descriptor	Waypoint Identifier	Fly-over	Course/Track °M(°T)	Distance (NM)	Turn direction	Altitude (ft)	Speed (kt)	Coordinates	VPA/RDH	Navigation specification	Remarks
001	IF	LAPAL	-	-	-	-	-	-	355412.6N 1290452.0E	-	RNAV 1	-
002	TF	JASPO	-	085(076.6)	6.0	-	+6 000	-	355536.2N 1291203.2E	-	RNAV 1	-
003	TF	MAKKY	-	147(138.8)	4.4	-	+5 000	-	355218.8N 1291535.8E	-	RNAV 1	IAF

RNAV APARU 2D

Serial Number	Path Descriptor	Waypoint Identifier	Fly-over	Course/Track °M(°T)	Distance (NM)	Turn direction	Altitude (ft)	Speed (kt)	Coordinates	VPA/RDH	Navigation specification	Remarks
001	IF	APARU	-	-	-	-	-	-	352442.1N 1290932.1E	-	RNAV 1	-
002	TF	PU751	-	037(028.8)	25.7	-	-	-	354713.4N 1292446.2E	-	RNAV 1	-
003	TF	PU752	-	351(343.5)	7.0	-	+7 000	-	355356.6N 1292219.1E	-	RNAV 1	-
004	TF	MAKKY	-	261(253.4)	5.7	-	+5 000	-	355218.8N 1291535.8E	-	RNAV 1	IAF

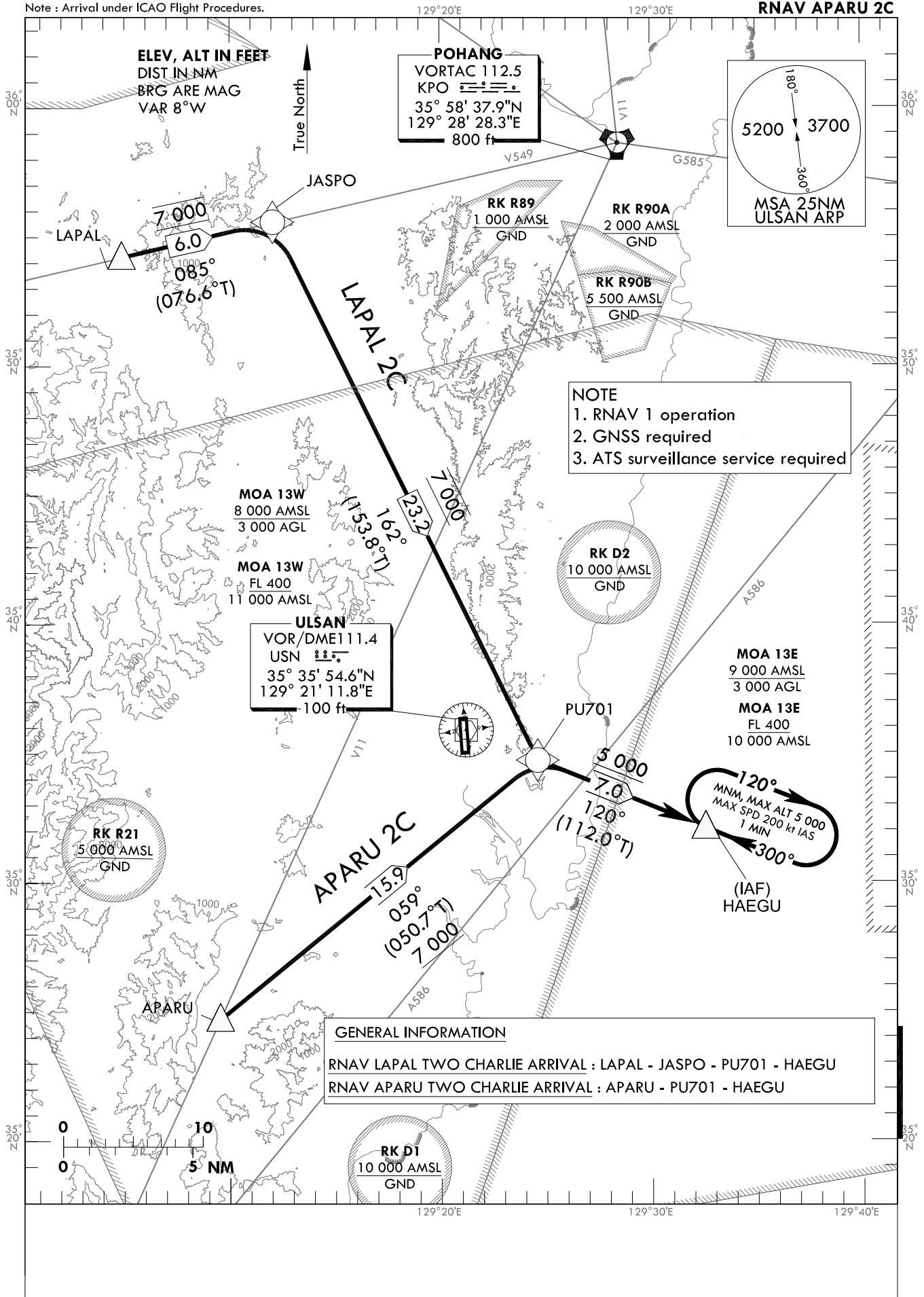
STANDARD ARRIVAL CHART
INSTRUMENT(STAR) - ICAO

TRANSITION ALT 14 000
TRANSITION LVL FL 140

POHANG APP 124.25
120.2
ULSAN TWR 118.75

ULSAN/Ulsan(RKPU)
RWY 36
RNAV LAPAL 2C
RNAV APARU 2C

Note : Arrival under ICAO Flight Procedures.



Change : Withdrawal of danger area(D3).

ULSAN/Ulsan(RKPU)
RWY 36
RNAV LAPAL 2C, RNAV APARU 2C
HOLDING PROCEDURE

AERONAUTICAL DATA TABULATION

Standard Instrument Arrival Procedure Coding Tables

RNAV LAPAL 2C

Serial Number	Path Descriptor	Waypoint Identifier	Fly-over	Course/Track °M(T)	Distance (NM)	Turn direction	Altitude (ft)	Speed (kt)	Coordinates	VPA/RDH	Navigation specification	Remarks
001	IF	LAPAL	-	-	-	-	-	-	355412.6N 1290452.0E	-	RNAV 1	-
002	TF	JASPO	-	085(076.6)	6.0	-	@7 000	-	355536.2N 1291203.2E	-	RNAV 1	-
003	TF	PU701	-	162(153.8)	23.2	-	@7 000	-	353444.8N 1292435.3E	-	RNAV 1	-
004	TF	HAEGU	-	120(112.0)	7.0	-	+5 000	-	353206.7N 1293232.3E	-	RNAV 1	IAF

RNAV APARU 2C

Serial Number	Path Descriptor	Waypoint Identifier	Fly-over	Course/Track °M(T)	Distance (NM)	Turn direction	Altitude (ft)	Speed (kt)	Coordinates	VPA/RDH	Navigation specification	Remarks
001	IF	APARU	-	-	-	-	-	-	352442.1N 1290932.1E	-	RNAV 1	-
002	TF	PU701	-	059(050.7)	15.9	-	+7 000	-	353444.8N 1292435.3E	-	RNAV 1	-
003	TF	HAEGU	-	120(112.0)	7.0	-	+5 000	-	353206.7N 1293232.3E	-	RNAV 1	IAF

HOLDING PROCEDURE

Holding Identification	Path Descriptor	Waypoint Identifier	Fly-over	Course/Track °M(T)	Time (min)	Turn direction	Altitude (ft)	Speed (kt)	Coordinates	VPA/RDH	Navigation specification	Remarks
RNAV LAPAL 2C	HM	HAEGU	Y	300 (292.1)	1.0	R	@5 000	-200	353206.7N 1293232.3E	-	RNAV 1	-
RNAV APARU 2C	HM	HAEGU	Y	300 (292.1)	1.0	R	@5 000	-200	353206.7N 1293232.3E	-	RNAV 1	-